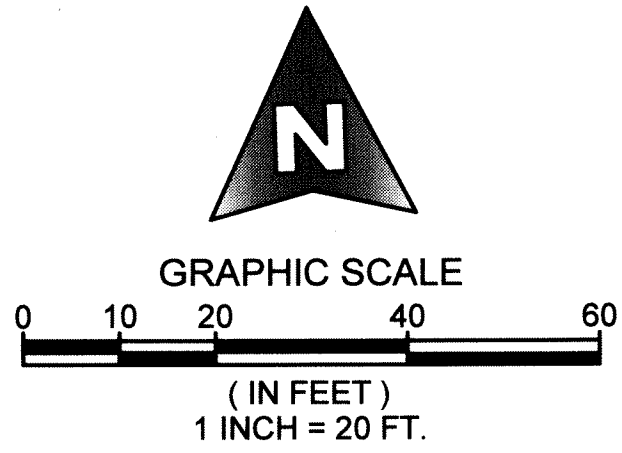
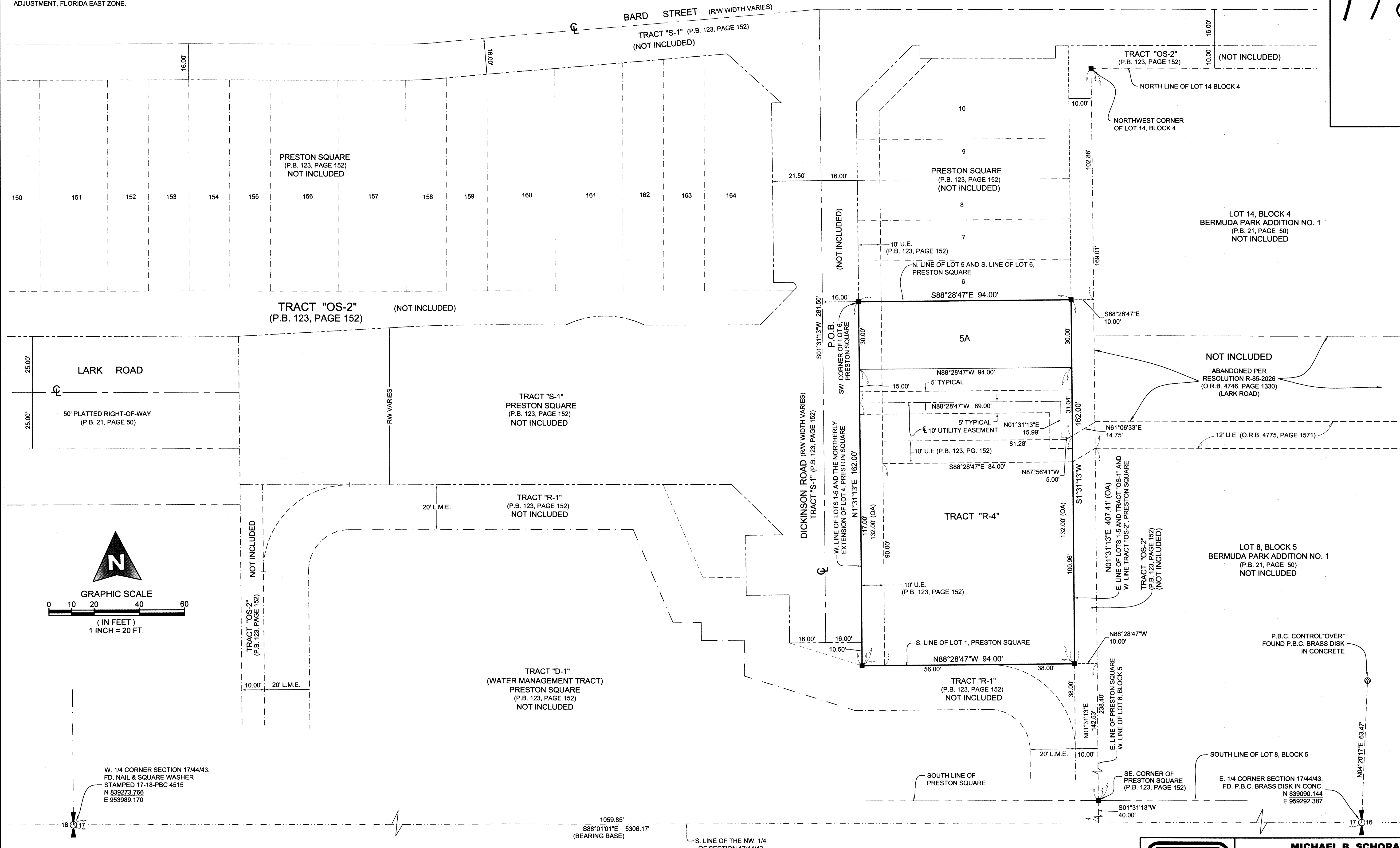


178

COORDINATE NOTE:
STATE PLANE COORDINATES SHOWN ARE GRID DATUM, NAD 83 1990
ADJUSTMENT, FLORIDA EAST ZONE, COORDINATE SYSTEM 1983 STATE
PLANE, TRANSVERSE MERCATOR PROJECTION
LINEAR UNIT = US SURVEY FEET
ALL DISTANCES ARE GROUND
SCALE FACTOR = 1.0000429
GROUND DISTANCE X SCALE FACTOR = GRID DISTANCE
BEARINGS AS SHOWN HEREON ARE GRID DATUM, NAD 83 1990
ADJUSTMENT, FLORIDA EAST ZONE.

PRESTON SQUARE RE-PLAT NO. 1

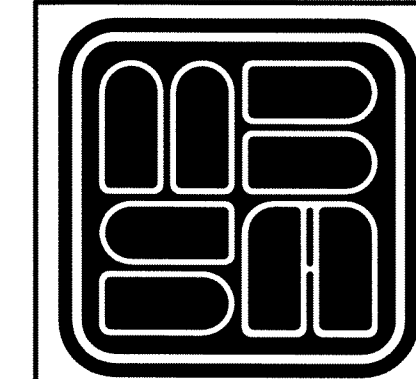
BEING A RE-PLAT OF LOTS 1 THROUGH 5, TRACT "OS-1" AND A PORTION OF TRACT "S-1", PRESTON SQUARE,
AS RECORDED IN PLAT BOOK 123, PAGE 152, PUBLIC RECORDS OF PALM BEACH COUNTY, FLORIDA AND LYING IN
SECTION 17, TOWNSHIP 44 SOUTH, RANGE 43 EAST, VILLAGE OF PALM SPRINGS, PALM BEACH COUNTY, FLORIDA



W. 1/4 CORNER SECTION 17/44/43.
FD. NAIL & SQUARE WASHER
STAMPED 17-18-PBC 4515
N 839273.766
E 953989.170

1059.85'
S88°01'01"E 5306.17'
(BEARING BASE)
S. LINE OF THE NW. 1/4
OF SECTION 17/44/43

E. 1/4 CORNER SECTION 17/44/43.
FD. P.B.C. BRASS DISK IN CONC.
N 839090.144
E 959292.387



MICHAEL B. SCHORAH & ASSOCIATES, INC.
1850 FOREST HILL BLVD., SUITE 206
WEST PALM BEACH, FLORIDA 33406
EB# 2438 TEL. (561) 968-0080 FAX. (561) 642-9726 LB# 2438

PRESTON SQUARE RE-PLAT NO. 1